

A close-up photograph of a dark green, ribbed knit fabric, likely a sweater or turtleneck. The texture is highly detailed, showing the individual stitches and the way the fabric folds and drapes. The lighting is soft, creating subtle gradients of green and highlighting the tactile quality of the material.

Cotelé

MU7140

gancedo

1945



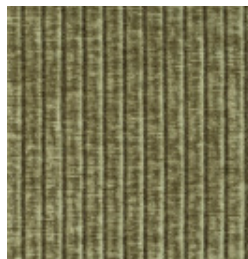
**cotelé - parmesan**  
TP1517-005-138



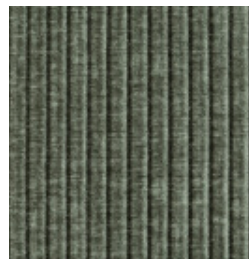
**cotelé - honey**  
TP1517-051-138



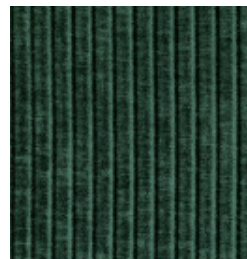
**cotelé - militar**  
TP1517-050-138



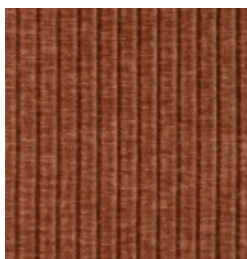
**cotelé - bog**  
TP1517-022-138



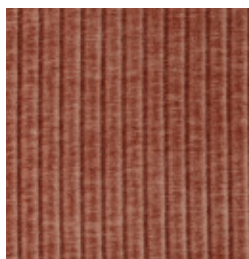
**cotelé - forest**  
TP1517-021-138



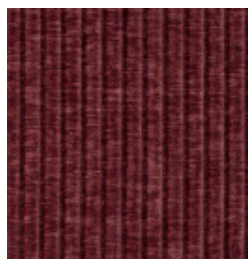
**cotelé - loden**  
TP1517-020-138



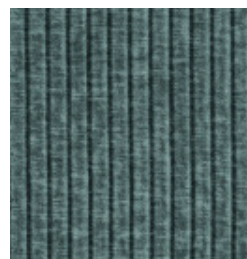
**cotelé - copper**  
TP1517-072-138



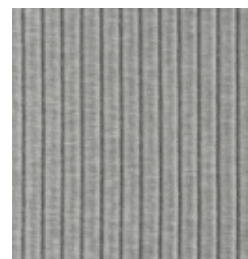
**cotelé - blush**  
TP1517-004-138



**cotelé - ruby**  
TP1517-001-138



**cotelé - ocean**  
TP1517-006-138



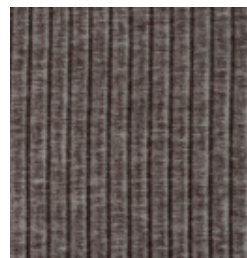
**cotelé - vapour**  
TP1517-009-138



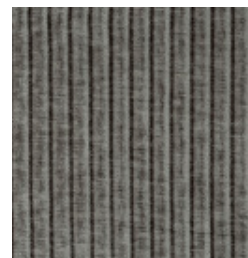
**cotelé - pelican**  
TP1517-003-138



**cotelé - almond**  
TP1517-030-138



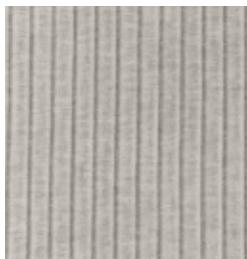
**cotelé - brown**  
TP1517-071-138



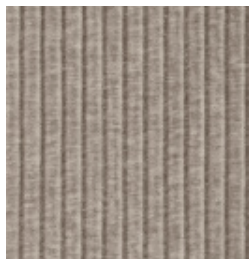
**cotelé - cloud**  
TP1517-090-138



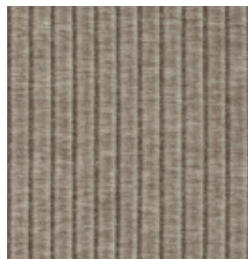
**cotelé - white**  
TP1517-000-138



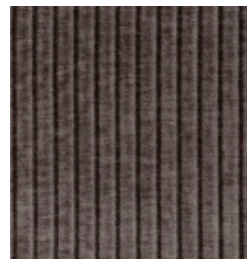
**cotelé - seashell**  
TP1517-031-138



**cotelé - mineral**  
TP1517-032-138



**cotelé - wind**  
TP1517-033-138



**cotelé - coffe**  
TP1517-007-138





**cotelé - antracite**  
TP1517-091-138

# cotelé

## MU 7 1 4 0

### FICHA TÉCNICA TECHNICAL SHEET

NOMBRE NAME	REFERENCIA CODE	ANCHO WIDTH cm / in	PESO WEIGHT kg/ml	COMPOSICIÓN COMPOSITION	ABRASIÓN MARTINDALE	MANTENIMIENTO MAINTENANCE	USO USE
cotelé	TP1517	138 54.33	0,602	100% PES	80 000		



#### Inflamabilidad Flammability

BS 5852 Part 1  
Fire test to Upholstery materials





a

1945